

# Managing competency through enterprise architecture

*Dr Jon Holt*  
*Brass Bullet Ltd*



**Brass Bullet Ltd.**



# Overview

1. Introduction to enterprise architecture
2. Effective enterprise architecture
3. Conclusions



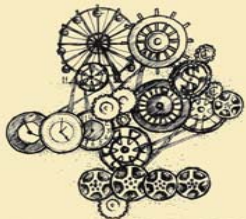
# 1. Introduction to enterprise architecture

- Enterprise architecture (EA) is a powerful concept
  - Applies to all organisation
  - Exists for all organisations (often hidden)
- But what is EA?



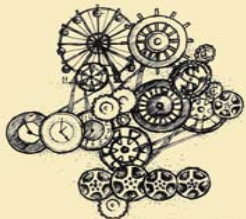
# Video

The video clip is not available in this version of the presentation.



# Enterprise architecture

- EA is about spotting gorillas
  - The gorilla of change
  - The gorilla of opportunity
  - The gorilla of technology
- An effective EA will allow you to:
  - Understand ‘why’
  - Understand the risks
  - Relate different aspects of the business together



# EA myths

- Many EA definitions stress:
  - Harmonisation of IT assets with business
  - Definition of specific views
- EA has been hijacked by the techies
- Very often, people forget 'why'
  - No understanding of requirements



# Professionalism

- Capability =
  - The ability of the organisation
- Competency =
  - The ability of the individual
- Professionalism =
  - Capability + competency



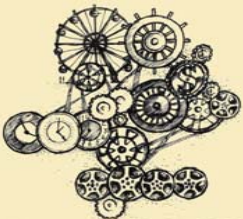
## 2. Effective enterprise architecture

- The EA-SE project
  - Community research programme from the NCC in association with the IET
  - A ProfIT Alliance initiative (BCS, e-Skills UK, Intellect, NCC and IET)
- Series of 10 facilitated workshops
- Outputs
  - Identification of common language for EA
  - Pragmatic training programme of 'how to'
  - Competency framework for roles involved in EA

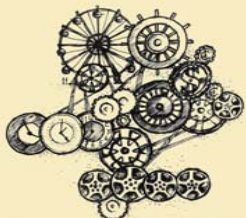
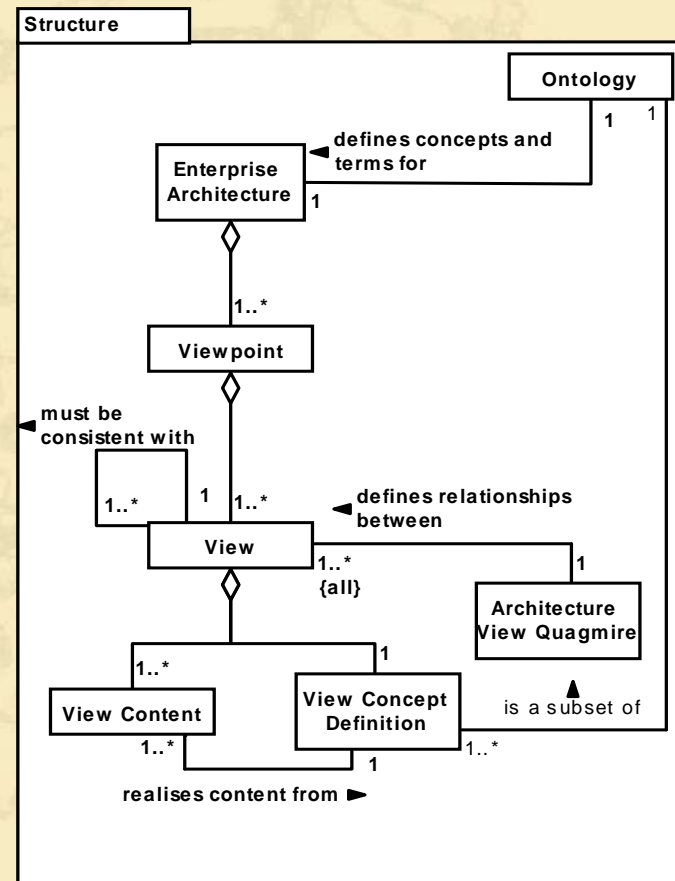


# Modelling

- EAs exhibit the three evils of life:
  - Complexity
  - Lack of understanding
  - Communication problems
- Essential to model
  - Simplify the reality
  - Ensure consistency
  - Ensure congruency

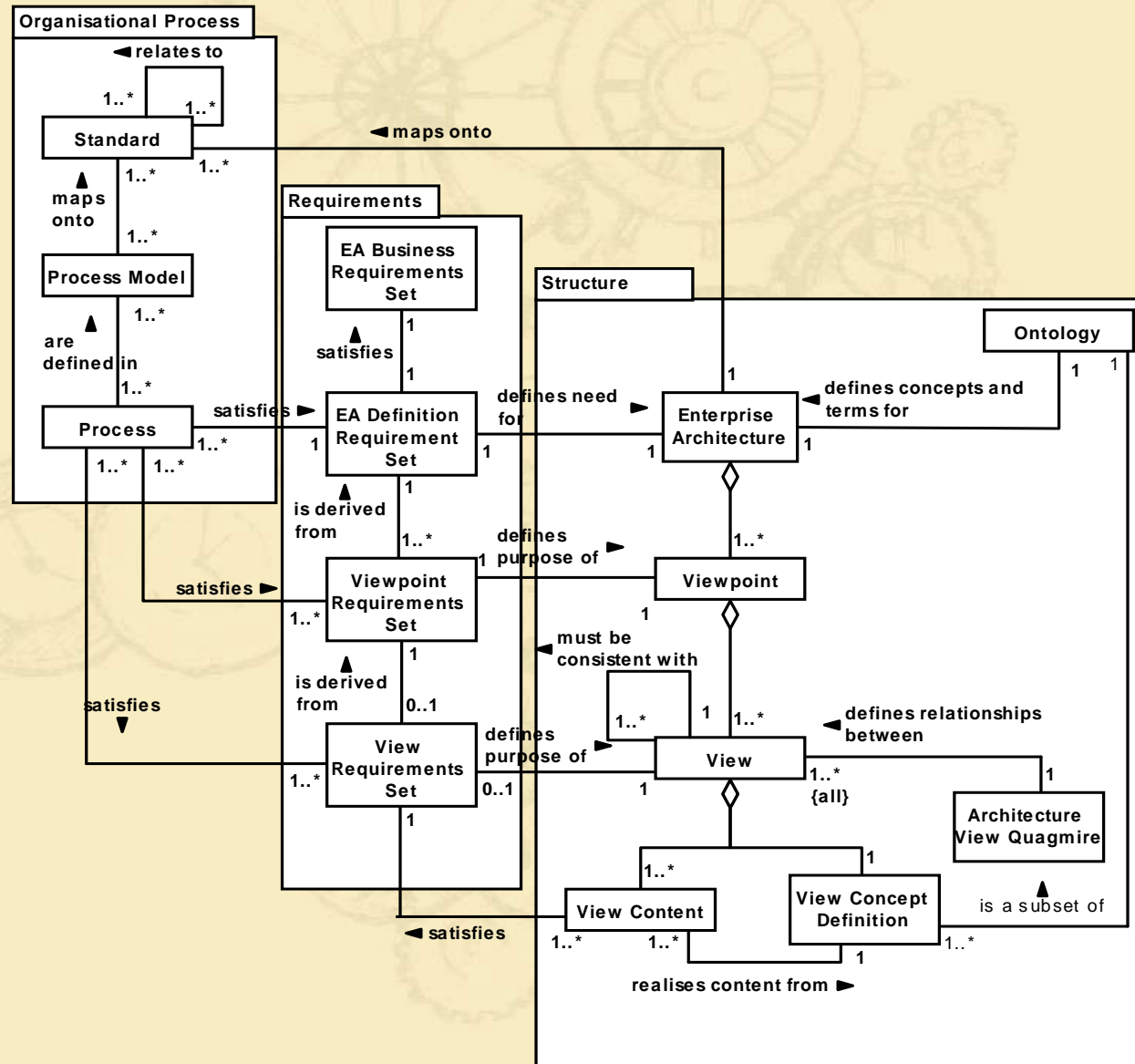


# The EA meta-model

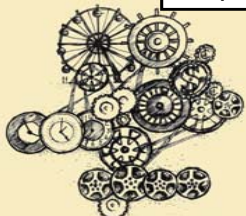
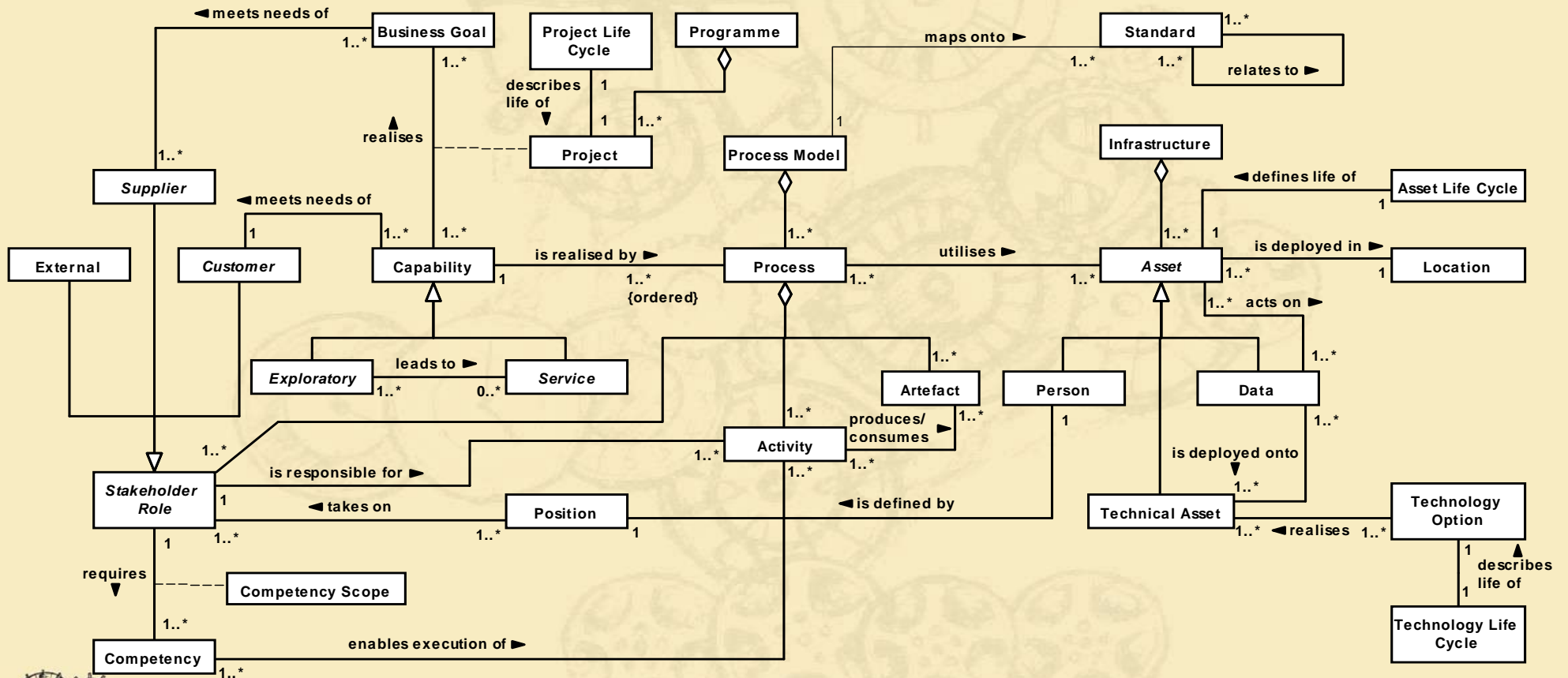




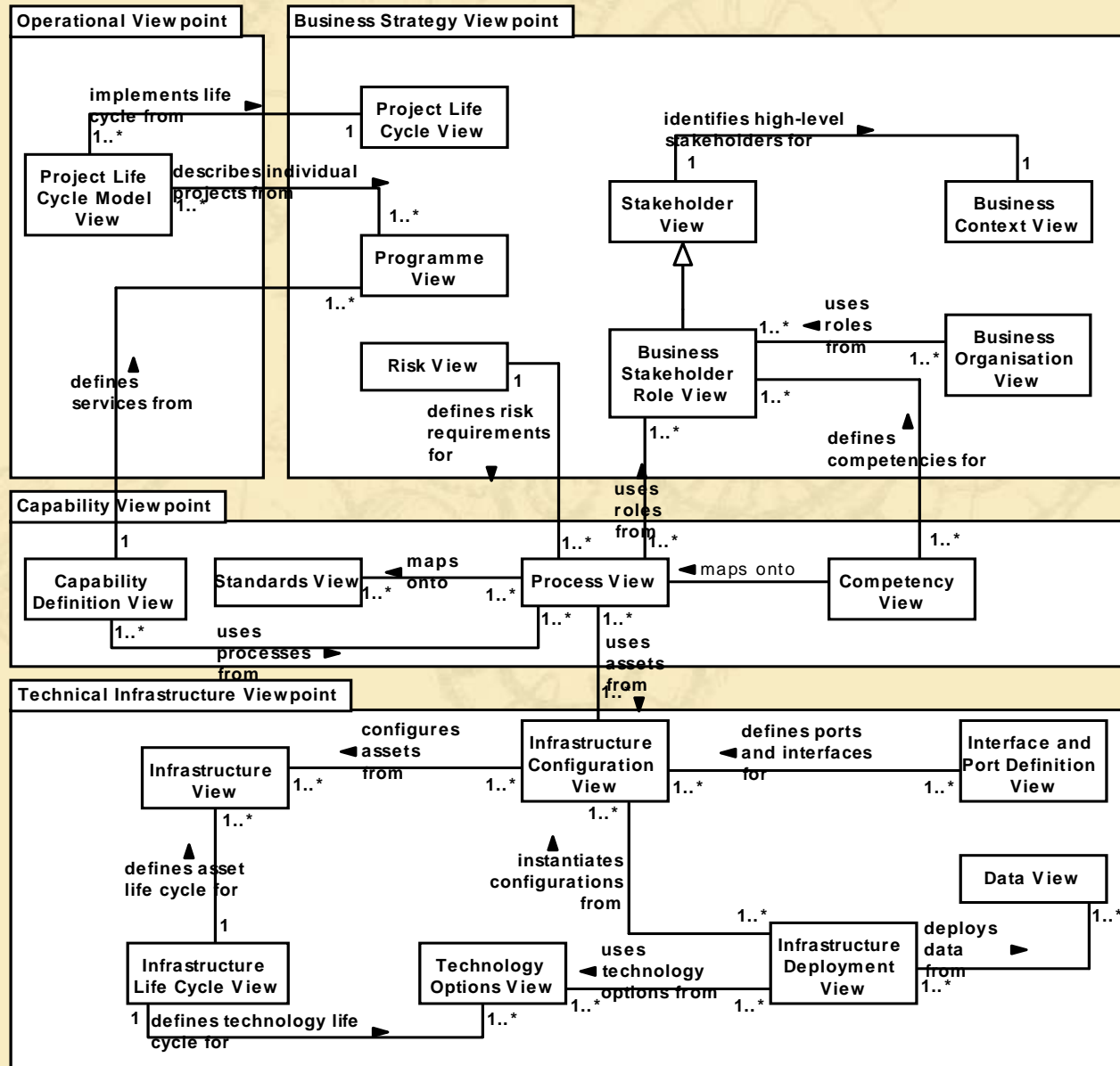
# The EA meta-model



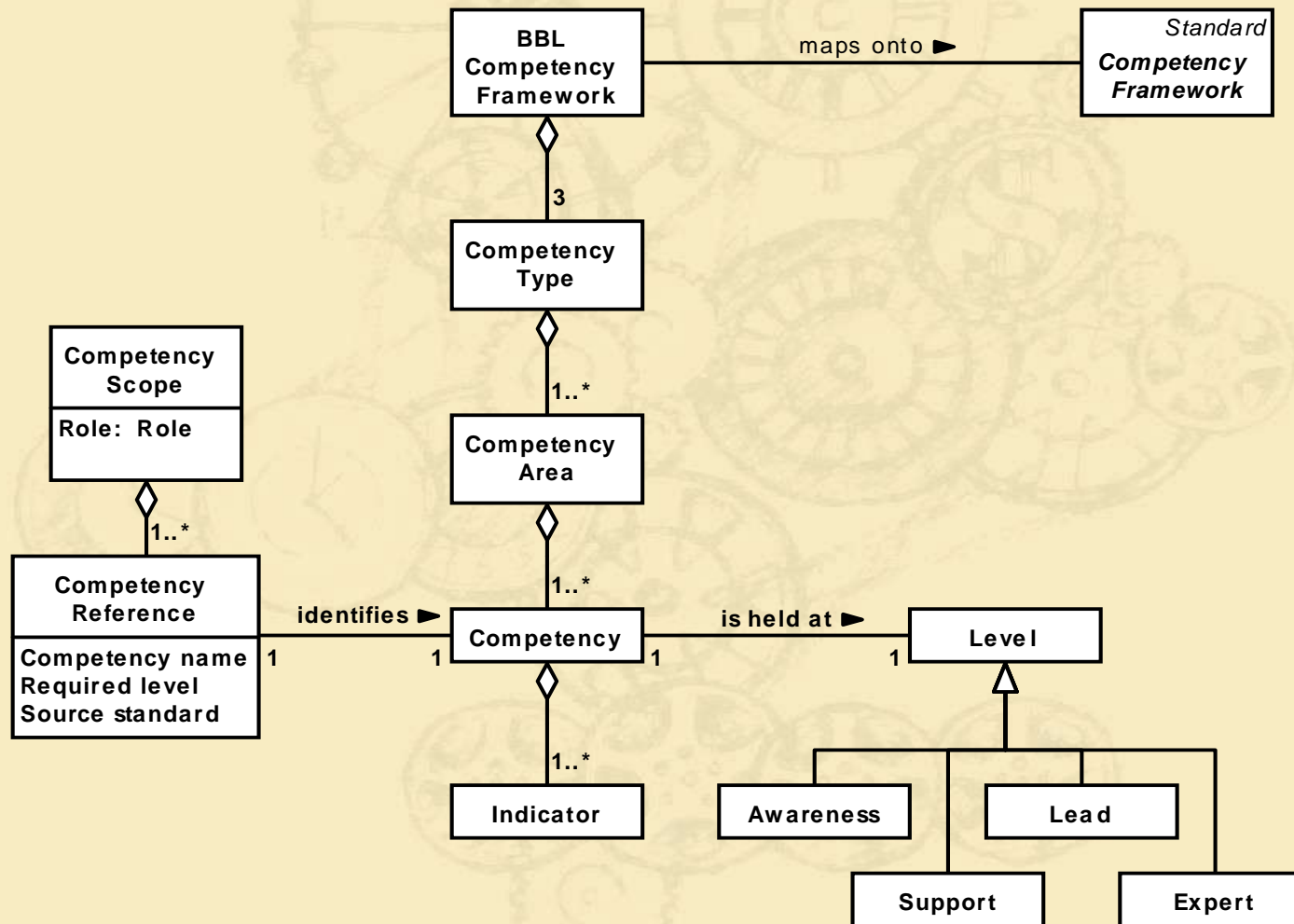
# Ontology



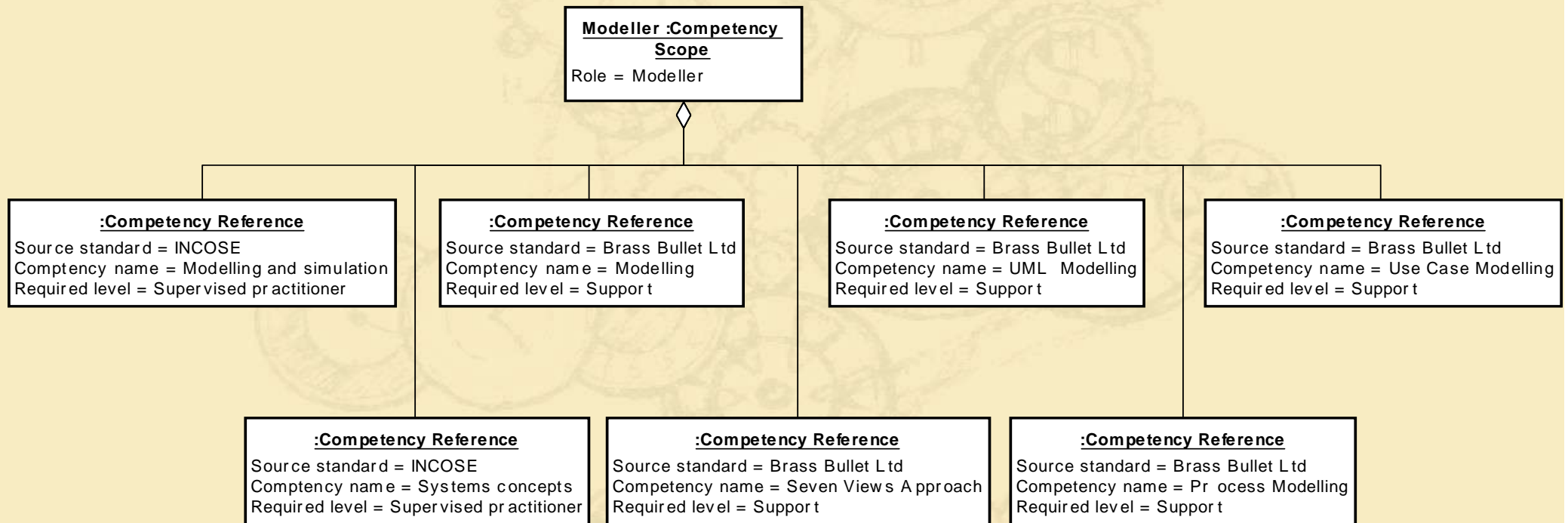
# Views



# Expansion of ontology



# Example view



# 3. Conclusions

- EAs help to manage and control change
- EA should encompass the whole business
  - Not just the IT assets
- Competency is an essential part of any EA
  - Any single view is limited

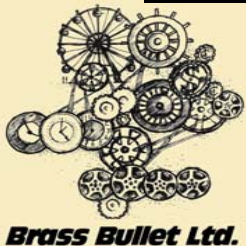


# Document History

*- this page NOT to be printed -*

<b>Title</b>	<i>Managing complexity through EA</i>
<b>Created by</b>	<i>JDH</i>
<b>Date</b>	<i>18.11.2008</i>

<b>Version</b>	<b>Date</b>	<b>Author</b>	<b>Status</b>	<b>Notes</b>
1.0	18.11.2008	JDH	Working	First draft, ready for review
1.1	24.11.2008	JDH	Release	Updated, based on review comments



# Model References

*- this page NOT to be printed -*

Slides	Reference
<i>All</i>	<i>Organisation\Brass Bullet Ltd EA\Model\EAmodel19</i>

